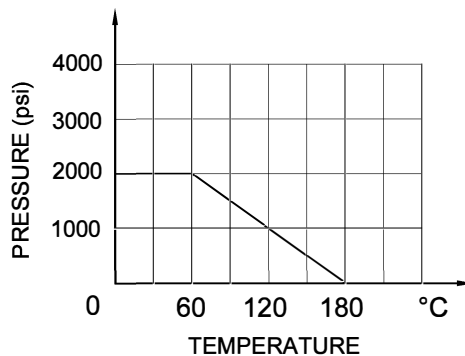
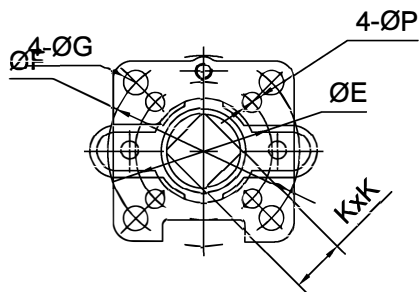
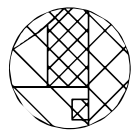


DN8~DN32



DIMENSIONS

NPS	L	d	NPT	H	W	E	F	Ra	Rb	K	Weight (Kg)
1/4"	65	11	1/4"	72.0	130	36	42	3	3	9	
3/8"	65	14	3/8"	72.0	130	36	42	3	3	9	
1/2"	75	14	1/2"	72.0	130	36	42	3	3	9	
3/4"	80	20	3/4"	80.5	130	36	42	3	3	9	
1"	90	25	1"	95.5	150	42	50	3	3.5	11	
1 1/4"	110	32	1 1/4"	100.5	150	42	50	3	3.5	11	
1 1/2"	120	38	1 1/2"	118.5	210	50	70	3.5	4.5	14	
2"	140	49	2"	126.0	210	50	70	3.5	4.5	14	

No.	Part	Material
1	Body	ASTM A351 CF8M
2	Hex Socket Bolt	ASTM A193 B8
3	O-Ring	VITON
4	Gasket	RPTFE (25% Carbon Fiber)
5	Seat	RPTFE (25% Carbon Fiber)
6	Ball	SS 316
7	Bonnet	ASTM A351 CF8M
8	Stem	ASTM A276 316
9	Stem Washer	RPTFE (25% Carbon Fiber)
10	Packing	RPTFE (25% Carbon Fiber)
11	Hex Socket Bolt	ASTM A193 B8
12	Stopper	SS 304
13	Handle	SS 304
14	Handle washer	PVC
15	Gland	ASTM A351 CF8
16	Hex Socket Bolt	ASTM A193 B8
17	Nut	ASTM A194 8
18	Ring	ASTM A182 F316
19		
20		
21		
22		
23		

Test Pressure	Shell Test	20.7 MPa
	Seal Test	15.2 MPa
	Air Test	0.6 MPa
	Suitable Temp.	-29 ~ 180 C

Standard	Face to Face	DIN 3203 - M3
	End Connection	ASME B1.20.1 & ISO 7/1
	Valve Design	ASME B16.34
	Valve Test	API 598
	FireSafe Test	API 607

Drawing No.	Date	Figure No.	Rev No.
AN	Oct 5, 2017	BV-63FFSN	002
Ball Valve Firesafe 2000WOG NPT Full Bore			
FLOCONTROL			

