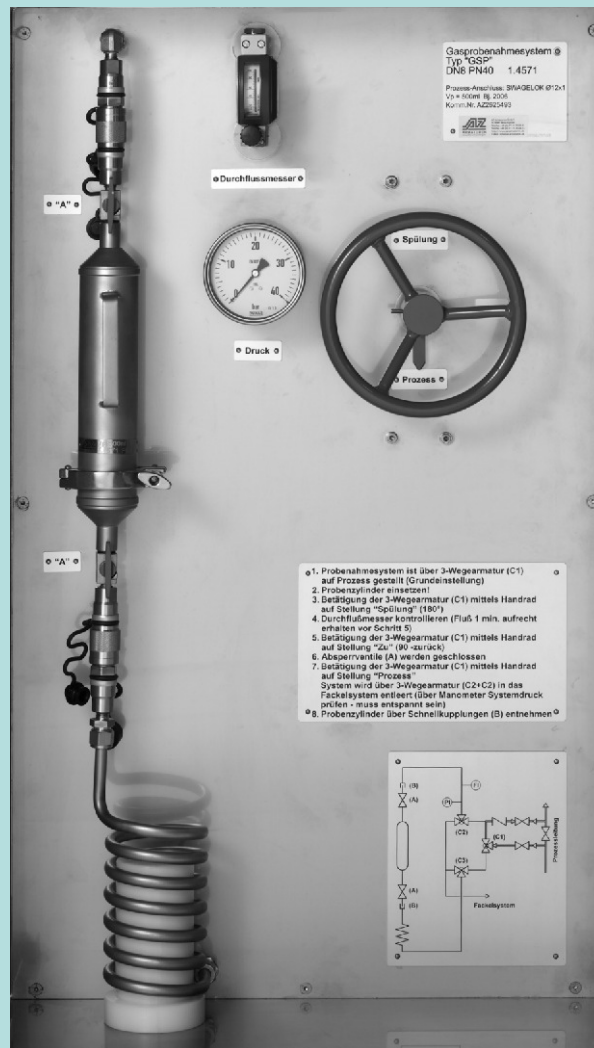


## TYPE "GSP" Gas Sampling System



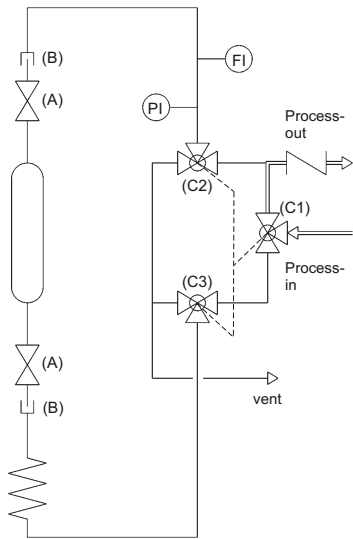
5.3.6

- integrated system purge
- representative and contamination free sample
- defined sampling quantity
- simple and safe operation



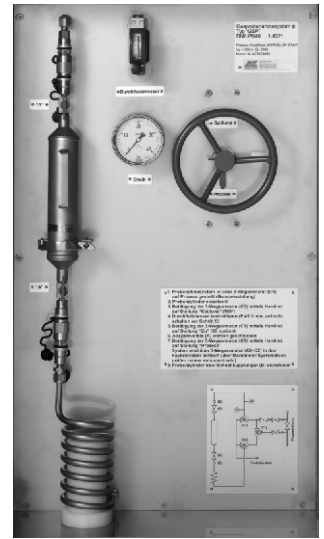
# Gas Sampling System

## Type "GSP"

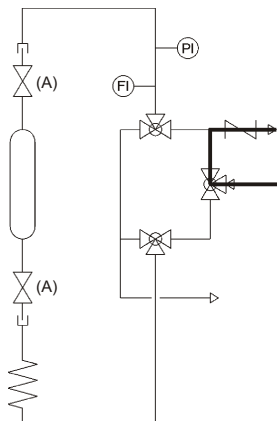


### Gas Sampling System Type "GSP"

The ability to purge the complete sampling system incl. sample cylinder ensures optimal retrieval of a representative, contamination free sample. The simple operation with only one handwheel ensures a safe sampling. The sampling cylinder can be easily removed by quick connects. This allows a defined and contamination free sample quantity. These features provide a safe operation of the gas sampling system.

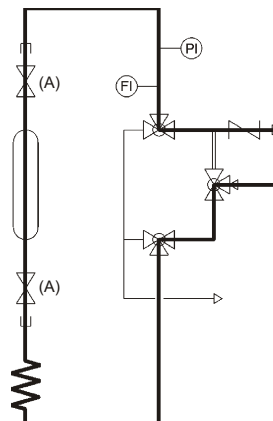


### Operation and Function



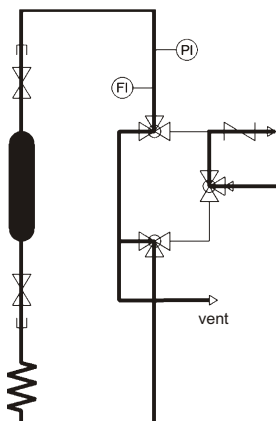
#### 1 - basic position

handwheel in position  
**-process-**  
install the sample cylinder and open the shut-off valves (A)



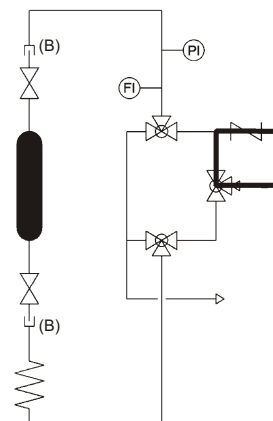
#### 2 - system purge

handwheel in position  
**-purge-**  
purge for a few minutes and then close the shut-off valves (A) on the sample cylinder.



#### 3 - depressurizing

handwheel in position  
**-closed-**  
The connection between the process and the sampling system is now cut off.



#### 4 - removal of sample cylinder

handwheel in position  
**-process-**  
open the quick connects (B) and remove the sample cylinder

special designs on request



**AZ-Armaturen GmbH**  
D-78087 Mönchweiler  
Waldstraße 7  
Telefon +49 (0)7721 7504-0  
Telefax +49 (0)7721 7504-13  
e-mail: [info@az-armaturen.de](mailto:info@az-armaturen.de)  
<http://www.az-armaturen.de>